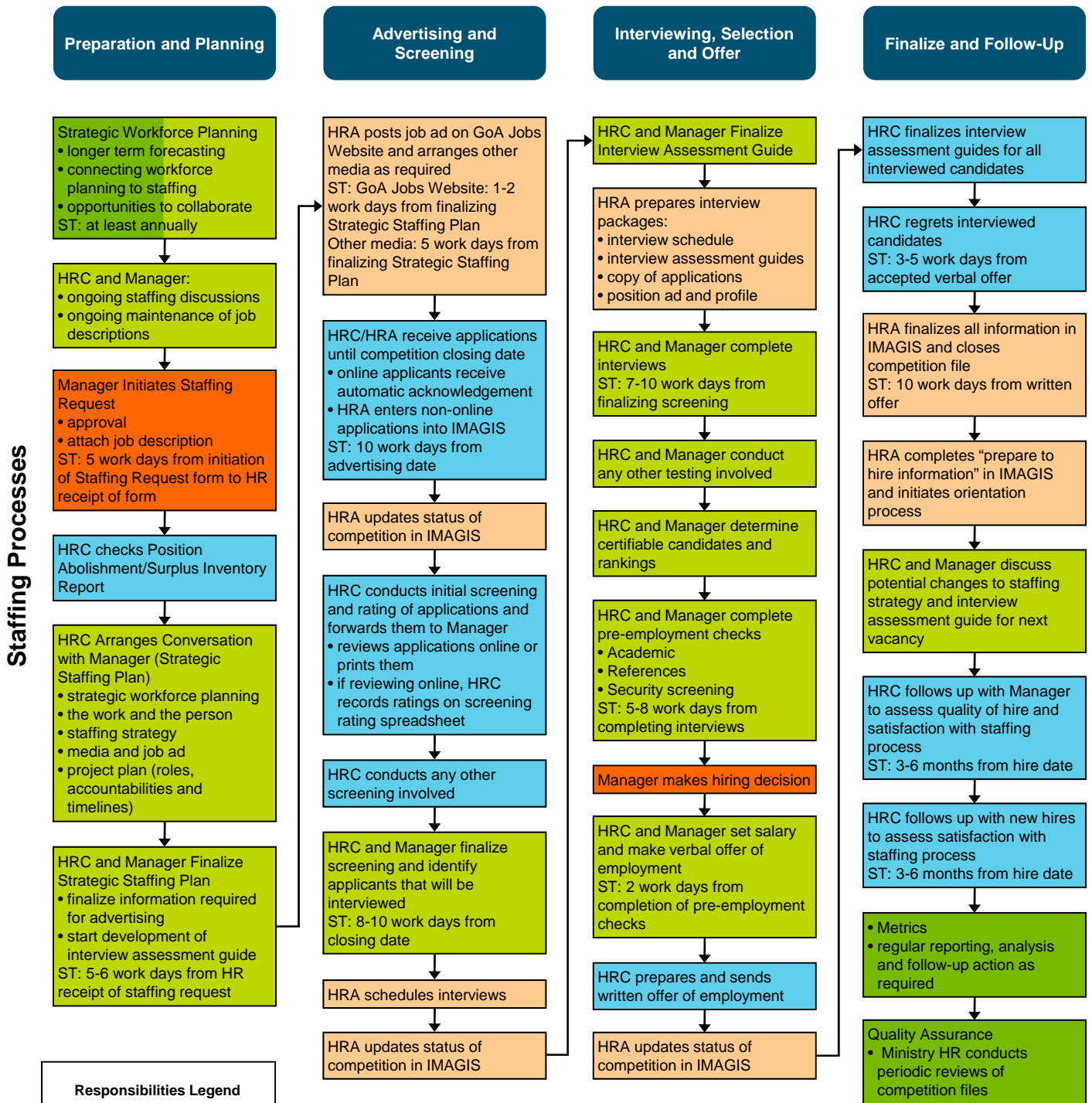


COMPETITION PROCESS CHART



Responsibilities Legend

- CHR and Ministry HR
- HRC
- HRC and Manager
- Manager
- HRA

ST – Staffing Timeline Target*

*Staffing timeline targets are estimated work days to complete each process. They can be impacted by a number of variables such as type of work; recruitment volume; applicant volume; availability of Line Managers, HR staff and applicants; position location; etc.

These timeline targets equate to the following average "time to fill" measures:
 - 15-16 work days (19-20 calendar days) from "initiation by Manager" to "first ad date"
 - 32-40 work days (44-54 calendar days) from "first ad date" to "first verbal offer date"